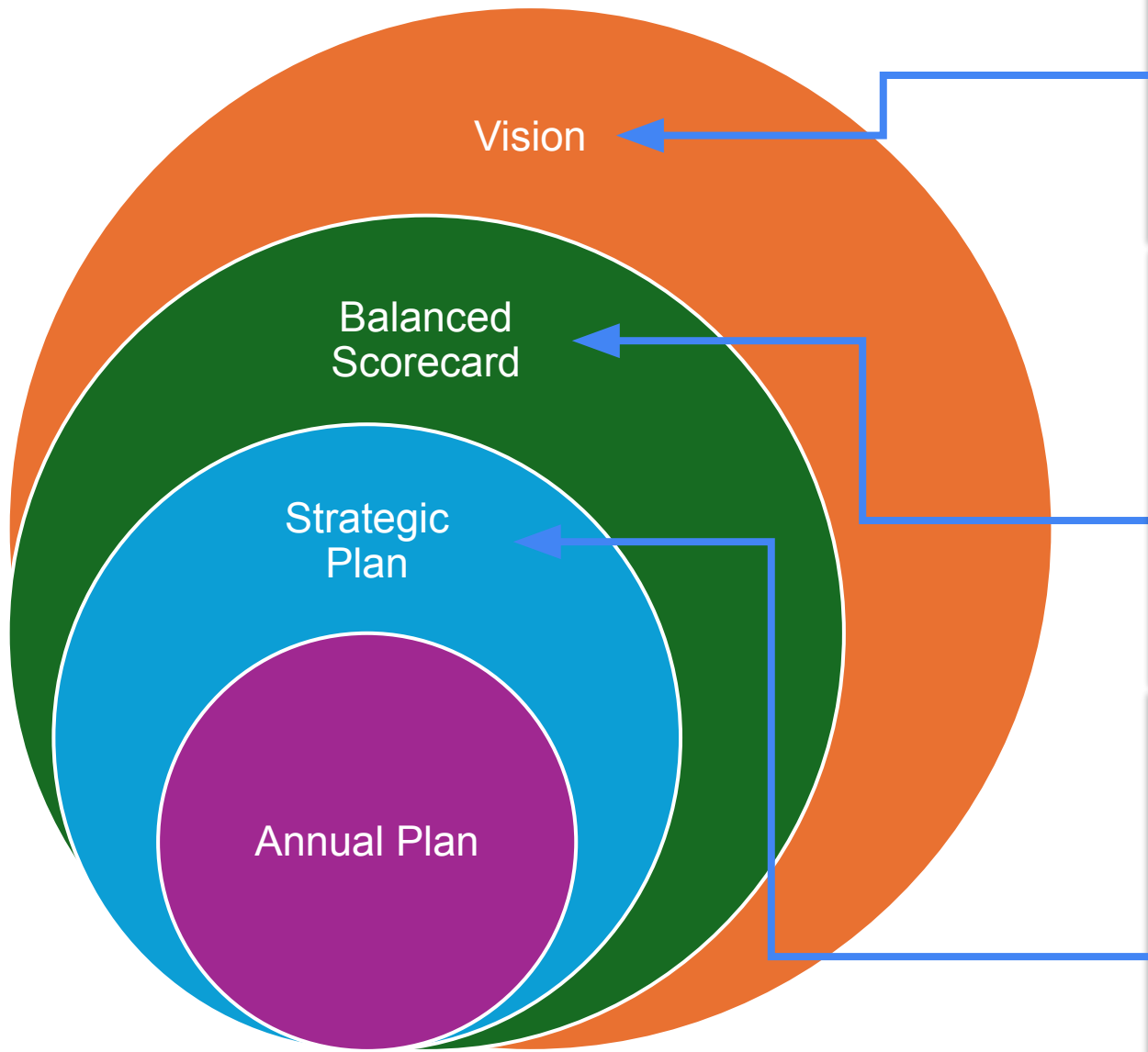




**Oxford Area School Strategic Plan and
Annual Implementation Plan 2025**



Oxford Area School
Te Kura o Te Poho Rakahua

Kāhui Whetū • Tātai Whetū • Rau Whetū

As a community, we align our learning and skills, showing how extraordinary we are.

Grow together
Thriving • Connected Communities

Kia ngātahi ai te tū, e pakari ai te tūaki
Stand united, stand strong

Our school has a special relationship with family, school, community, and the world. We will continue to strengthen our connections that ensure we all flourish. The community is at the heart of who we are.

Learn together
Pioneering • Collaborative Learning

Takoto te māhira, takatō te pūi
Learning will help you in life. It's great to learn and have knowledge.

We care. We care about what we will learn and learn from and with our teacher. Our school and friends to achieve, learning by utilizing expertise and knowledge around us.

Shine together
Courage • Success • Pride

He mahi kai hōaka, he mahi kai takaka.
Anything worthwhile requires considerable effort. See the rewards of your hard work.

To prepare for an uncertain future, we will empower our school to be risk takers and to seek excellence in all we do. We will celebrate all our achievements to inspire and motivate, each other, and our school.

Values
Kia whakaute Be Respectful Kia haepapa Be Responsible Kia manasaki Be Caring Kia manahau Be Positive

We meet the learning needs every student

Academic Learning

School Culture & Community Engagement

Teaching & Leadership

Tools, People, & Resources

We foster the importance of learning

We grow trusting relationships

We meet the learning needs of every student

We grow and develop

The Balanced Scorecard 2024-2034

Oxford Area School
Te Kura o Te Poho Rakahua

Kāhui Whetū • Tātai Whetū • Rau Whetū

As a community, we align our learning and skills, showing how extraordinary we are.

Strategic Plan 2020 - 2025

Grow together
Thriving • Connected Communities

Goal Strengthen the connection between our whānau and our school

Initiatives Together we share our learning

Outcomes A stronger connection between our whānau and our school, all the way through to year 13

Learn together
Pioneering • Collaborative Learning

Goal Prepare us for the future

Initiatives Learning that sticks with us

Outcomes We have strengthened our competencies to be positive contributors to society

Shine together
Courage • Success • Pride

Goal Inspire the spark of our business

Initiatives Connecting us with role models Recognising our successes

Outcomes We can acknowledge our successes with confidence

Values
Kia whakaute Be Respectful Kia haepapa Be Responsible Kia manasaki Be Caring Kia manahau Be Positive



Oxford Area School

Te Kura o Te Poho Rakahua

Kāhui Whetū

Tātai Whetū

Rau Whetū

As a community, we align our learning and skills, showing how extraordinary we are.

Grow together

Thriving • Connected
Communities

**Kia ngātahi ai te tū, e pakari ai te
tuarā**

Stand united, stand strong.

- ▶ Our school has integral relationships with family, school, community, and the world. We will nurture meaningful connections that ensure we all flourish. The community is at the heart of who we are.

Learn together

Pioneering • Collaborative
Learning

Takata te mōhio, takatā te pai

Learning will help you in life. It's great
to learn and have knowledge.

- ▶ We are a future-focused school. We will work and learn from and with one another. Our school will flourish in authentic learning by utilising expertise and knowledge around us.

Shine together

Courage • Success • Pride

**He mahi kai hoaka, he mahi kai
takata.**

Anything worthwhile requires
considerable effort. See the rewards
of your hard work.

- ▶ To prepare for an unknown future, we will empower our school to be risk takers and to seek excellence in all we do. We will celebrate all our achievements to foster pride in ourselves, each other, and our school.

Values

Kia whakaute
Be Respectful

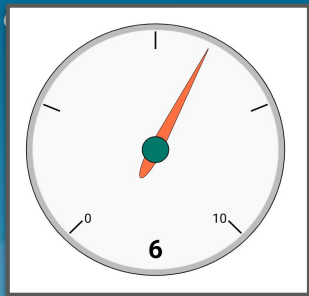
Kia haepapa
Be Responsible

Kia manaaki
Be Caring

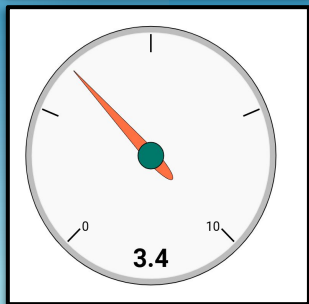
Kia manahau
Be Positive

We meet the learning needs of every student

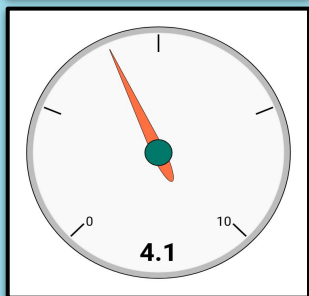
Academic Learning



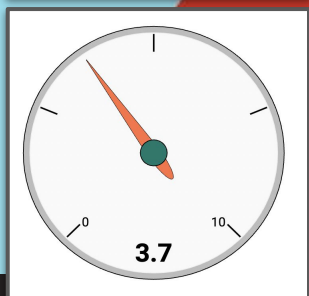
School Culture & Community Engagement



Teaching & Leadership



Tools, People, & Resources



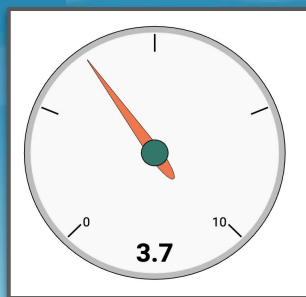
We foster the importance of learning

We grow trusting relationships

We meet the learning needs of every student

We grow and develop

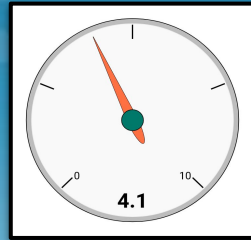
Tools, People, & Resources



We grow and develop

Ref	Measure	Method	Target
1.1	Staff engaged in their professional learning	% of staff engaged in external PLD	100% of staff who work at least 10 hours per week undertake at least 2 external PLD opportunities p.a.
1.2	Professional learning being implemented at school	Survey - measuring impact of recent external PLD	100% of external PLD has made a positive impact at school within the year
1.3	Continual improvement in the professional growth cycle	Progress towards professional goals	100% of staff have demonstrated sufficient progress in professional growth goals p.a.

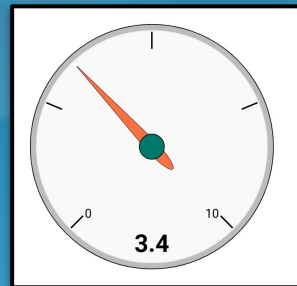
Teaching & Leadership



We meet the learning needs of every student

Ref	Measure	Method	Target
2.1	Literacy and numeracy achievement	Corequisite pass rate	Every student attempting NCEA achieves their literacy and numeracy requirements by the end of year 11
2.2	Implementation of learning support plans	Learning support plan review meetings for reflection	100% of plans have been reviewed and commented on by named staff 100% of active learning support plans have a review meeting on a termly basis.
2.3	Progress in global competencies	Self-reflection pre and post, collated by classroom teacher	100% progress in at least one competency
2.4	Use of universal design for learning	Observation	100% of teachers show evidence of UDL in their teaching

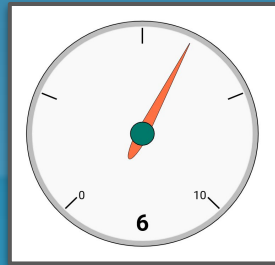
School Culture & Community Engagement



We grow trusting relationships

Ref	Measure	Method	Target
3.1	Community Partnerships	Wellbeing @ School Survey - Home Community Partnership Teaching and School Conditions (TSP) Version of TSP for Parents	325 Wellbeing Score median for Community Partnerships with an increase year on year TSP Learning partnerships: 100% "Very like our school" score for the first four questions 100% completion rate on TSP Parent survey results similar to the TSP for learning partnerships
3.2	Complaints and concerns	Reduction in upheld concerns, complaints, escalations	No upheld complaints Reduction in escalation to SLT

Academic Learning



We foster the importance of learning

Ref	Measure	Method	Target
4.1	Target Student School Attendance	Half day attendance	Unjustified absence
4.2	Academic progress	Mid and end of year Literacy and Numeracy OTJs from year 1-10	100% of students from years 1-10 making academic progress (at least one sub-level) in Literacy and Numeracy
4.3	NCEA Certificate Endorsements	NCEA final grades	NCEA Endorsements at L1, L2 at or above the National average



Oxford Area School

Te Kura o Te Poho Rakahua

Kāhui Whetū • Tātai Whetū • Rau Whetū

As a community, we align our learning and skills, showing how extraordinary we are.

Strategic Plan 2020 - 2025

Grow together

Thriving • Connected
Communities

Goal Strengthening the connection between
our whānau and our school

Initiatives Together, we share our learning

Outcomes A stronger connection between our
whānau and our school, all the way
through to year 13

Learn together

Pioneering • Collaborative
Learning

Goal Prepare us for the future

Initiatives Learning that sticks with us

Outcomes We have strengthened our
competencies to be positive
contributors to society

Shine together

Courage • Success • Pride

Goal Igniting the spark of our
success

Initiatives Connecting us with role models
Recognising our successes

Outcomes We can acknowledge our
successes with confidence

Values

Kia whakaute
Be Respectful

Kia haepapa
Be Responsible

Kia manaaki
Be Caring

Kia manahau
Be Positive

Educa
Edge
Learning
conferences
Rau Whetū

Grow together

Thriving • Connected
Communities

Goal: Strengthen the connection between our whānau and our school

Initiatives: Together, we share our learning

Outcomes: A stronger connection between our whānau and our school, all the way through to year 13

Ref	Measure	Target
1.1	Parent attendance at learning conferences	An increase in attendance to learning conferences
1.2	Opportunities to share the learning	100% of teachers meet live learning posts reporting requirements Increase in the number of opportunities to share the learning with whānau
1.3	Parents engaging in live learning posts	An increase in the percentage of whānau visiting our live learning post website
1.4	Parent engagements with posts over the thirteen-year levels.	An increase whānau engagement with learning posts



Ref	Measure	Target
2.1	Progress in reading, writing, and mathematics 1-10	Continuous improvement in student progress
2.2	NCEA achievement	Continuous improvement in NCEA achievement and endorsement
2.3	Implementation in Deep Learning	<p>Increase in confidence in Deep Learning implementation</p> <p>Increase in the use of Learning Design Plan templates</p> <p>Increase in the % of students awareness of the six competencies</p>

Assembly
Prizegiving
Guests
Mentoring
Whānau groups
Peer support
Houses

Shine together

Courage • Success • Pride

Goal:

Ignite the spark of our success

Initiatives:

*Connecting us with role models
Recognising our successes*

Outcomes:

We can acknowledge our successes with confidence

Ref	Measure	Target
3.1	Tuakana teina opportunities	Increase in opportunities and continual improvement in perceptions of success
3.2	Recognising student successes in various events	Opportunities to recognize successes that reflect student achievements Continual improvement in perceptions of success

B	S	Together we share our learning	Method	Target
3.1	1.2 1.3 1.4	Creating engaging ' news feed ' posts sharing taurira learning to enhance whānau partnerships	To develop news feed posts that engage whānau via Helix	Baseline interactions Whānau learning partnerships perception
		Learning that sticks		
2.4	2.3	Meet the diverse and variable needs of our taurira	Strengthen the Deep Learning element pedagogical practices to include the implementation of Universal Design for Learning	100% of teaching staff have made a minimum of one progression on the pedagogical practice rubric
4.2	2.1	Acceleration of taurira in years 0-10 in English and Mathematics and Statistics	Explore and develop our understanding of acceleration at Oxford Area School Through additional tuition in years 7/8: <ul style="list-style-type: none"> In-school - a suitably qualified maths kaiako provides additional tuition to groups of 4 students for 30 minutes, 4 times a week. Online - taurira engages with an online tutoring programme for 30 minutes, 4 times a week, supervised by a teacher aide. Hybrid - taurira will engage with independent online tutoring, supported by a kaiako or teacher aide for 30 minutes, four times a week. 	100% Acceleration of target group of year 7/8 taurira in e-asTTle Mathematics results
4.2	2.1	English and Mathematics and Statistics Curriculum Implementation	OTJ Implementation of the Y0-6 English and Y0-8 Mathematics and Statistics Curricular	Increase % of taurira progress
		Recognising our successes		
2.2	3.2	Recognising the whole taurira through their contributions in sports, service, culture and academics	Increase opportunities, refine processes to record and recognise contributions. Develop a process to share contributions with whānau	An increase in "Culture" (61), "Academic" (64), and "Service" (149) entries and Whānau feedback

Targets and Analysis of Variance

Targets 2025

[2025 Targets for Annual Plan](#)

Analysis of Variance 2024

1. [2024 Analysis of Variance - NCEA](#)
2. [2024 Analysis of Variance - Mathematics](#)
3. [2024 Analysis of Variance - Reading](#)
4. [2024 Analysis of Variance - Writing](#)

Te Kura o Te Poho Rakahua Oxford Area School 2025

Kāhui Whetū - Tātai Whetū - Rau Whetū

As a community, we align our learning and skills, showing how extraordinary we are.

